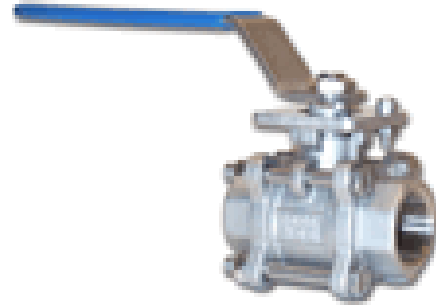


4500 Series

Three Piece Ball Valves

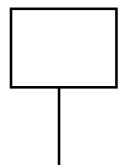
Features & Benefits

- For food and general chemical service applications
- Available in stainless steel or carbon steel
- Body and end cap are investment cast
- Self adjusting stem packing
- Blow-out proof stem design
- 100% air tested under water at 100 psi
- Temperature range -40°F to +450°F
- Working pressure: 1/4"-2" at 1000 psi; 2-1/2"-4" at 800 psi
- ISO 5211 mounting pad
- End type: threaded, socket weld, butt weld, flanged

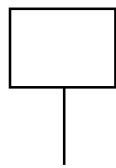


Valve Size	Operating Torque in-lbs	Flow Coefficient Cv	Weight Lb
1/4", 3/8"	50	10	1.6
1/2"	75	12	1.6
3/4"	100	35	2.1
1"	150	68	3.1
1-1/4"	200	105	4.3
1-1/2"	225	150	6.3
2"	370	290	10.5
2-1/2"	850	390	23.0
3"	1000	580	32.1
4"	1500	1020	35.7

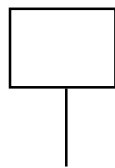
Ordering Schematic



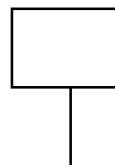
Series
4500



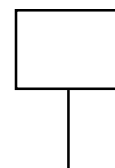
Material
Carbon Steel
Stainless Steel



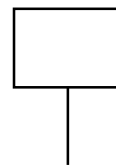
Port
Full



Packing
Teflon



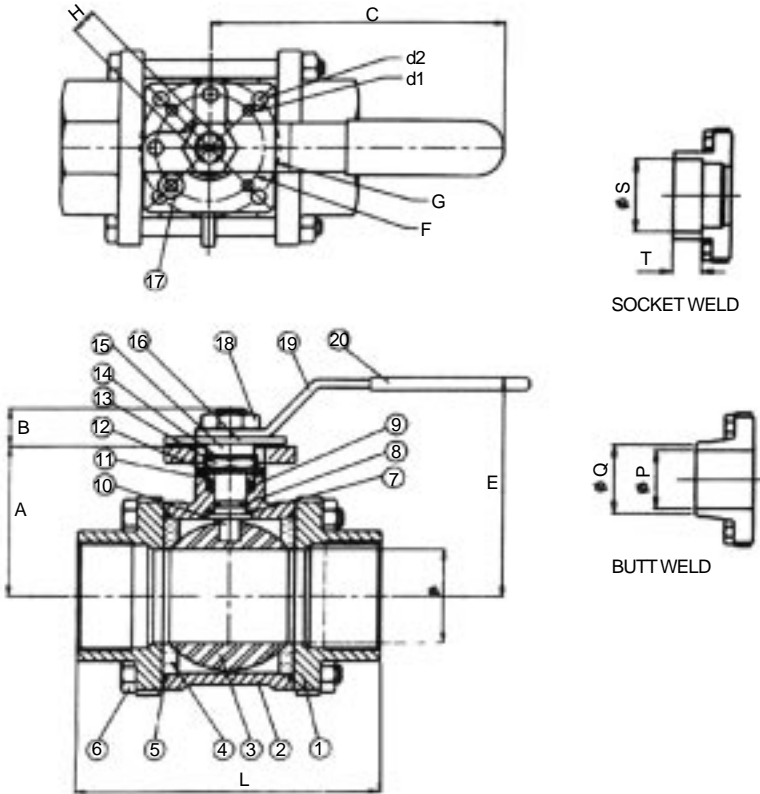
Seats
Teflon
Carbon



Ends
Threaded
Socket Weld
Butt Weld
Flanged

Engineering

Dimensions



Item	Part Name	Materials
1	End Cap	A 351 Gr. CF8M
2	Body	A 351 Gr. CF8M
3	Ball	SS 316
4	Ball Seats	RPTFE + Carbon
5	Gasket	PTFE
6	Bolts	SS 304
7	Thrust Washer	RPTFE
8	O-Ring	Viton
9	Stem Packing	PTFE
10	Stem	SS 316
11	Gland	SS 304
12	Disk Washer	SS 301
13	Stem Nut	SS 304
14	Nut Stop	SS 304
15	Spacer Washer	SS 304
16	Plater	SS 304
17	Stop Pin	SS 304
18	HandleNut	SS 304
19	Handle	SS 304
20	Handle Cover	Plastisol

Size	A	B	C	D	d1	d2	E	F	G	H	L	S	T	P	O
1/4"	1.38	0.43	5.12	0.43	0.24	0.24	2.28	1.42	1.65	0.35	2.38	0.56	0.44	0.39	0.49
3/8"	1.38	0.43	5.12	0.49	0.24	0.24	2.28	1.42	1.65	0.35	2.38	0.69	0.44	0.47	0.57
1/2"	1.38	0.43	5.12	0.59	0.24	0.24	2.28	1.42	1.65	0.35	2.50	0.86	0.50	0.59	0.69
3/4"	1.57	0.43	5.12	0.79	0.24	0.24	2.52	1.42	1.65	0.35	2.97	1.07	0.56	0.79	0.89
1"	1.89	0.55	6.10	0.98	0.24	0.28	3.03	1.65	1.97	0.43	3.39	1.33	0.63	0.98	1.10
1-1/4"	2.11	0.55	6.10	1.26	0.24	0.28	3.27	1.65	1.97	0.43	4.09	1.67	0.69	1.26	1.38
1-1/2"	2.50	0.71	8.07	1.50	0.28	0.35	3.62	1.97	2.76	0.55	4.61	1.92	0.75	1.50	1.61
2"	2.83	0.71	8.07	1.97	0.28	0.35	3.94	1.97	2.76	0.55	5.43	2.41	0.87	1.97	2.13
2-1/2"	3.62	0.87	11.42	2.56	0.35	0.44	5.51	2.76	4.02	0.67	6.69	2.91	0.87	2.56	2.76
3"	4.02	0.87	11.42	3.15	0.35	0.44	5.91	2.76	4.02	0.67	7.56	3.54	1.00	3.15	3.35
4"	5.20	1.02	13.19	3.94	0.44	0.53	7.68	4.02	4.92	0.87	8.90	4.54	1.26	3.94	4.13

Temperature Chart

